



GMT MONTHLY MEMBERSHIP PROGRESS REPORT

Results as of: 12/31/2023

Multiple District 21

LOCATION: ARIZONA

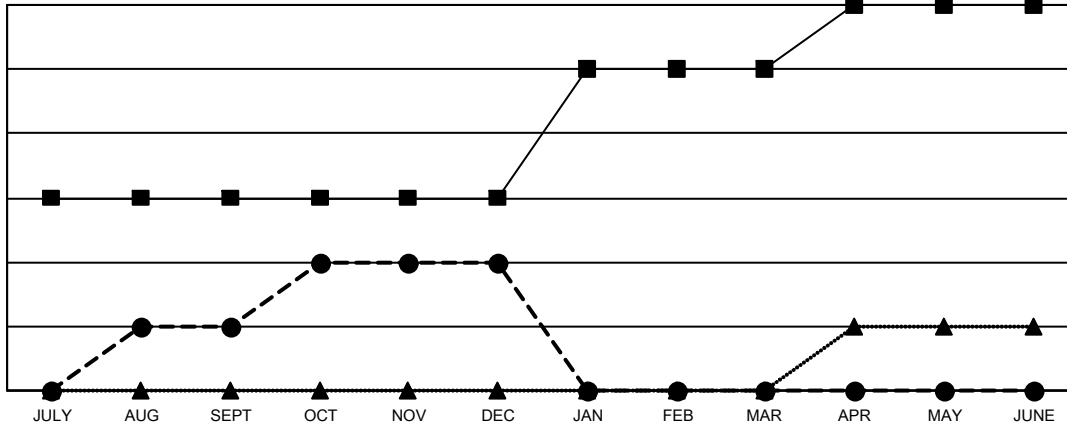
GMT: OPEN

GMT CA 1

Clubs			
RESULTS FOR 2023-2024			
QUARTER	NEW CLUB GOAL	NEW CLUBS	DROPPED CLUBS
JULY/AUG/SEPT	3	1	0
OCT/NOV/DEC	0	1	3
JAN/FEB/MAR	2	0	0
APR/MAY/JUNE	1	0	0

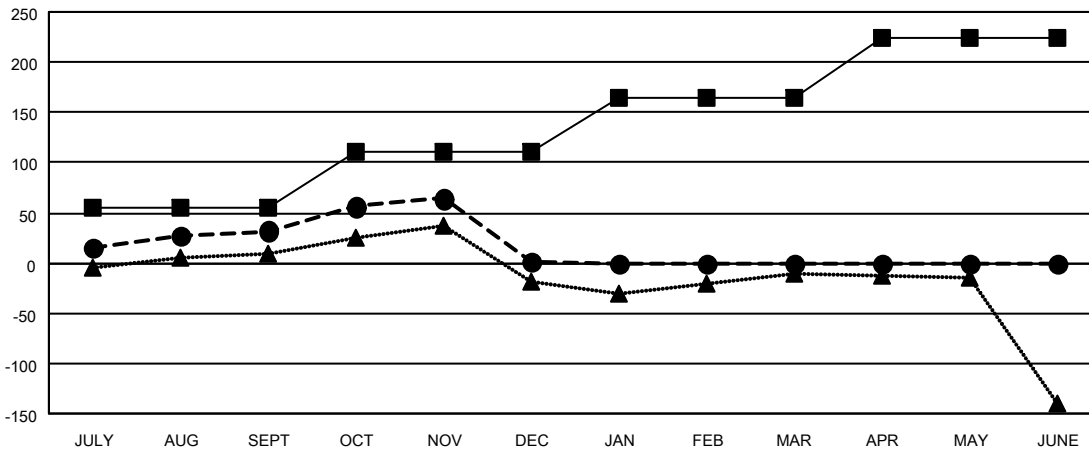
Members			
RESULTS FOR 2023-2024			
QUARTER	MEMBER GROWTH NET GOAL	MEMBER GROWTH ACTUAL	DROPPED MEMBERS ACTUAL (including transfers)
JULY/AUG/SEPT	55	140	89
OCT/NOV/DEC	55	87	109
JAN/FEB/MAR	55	0	0
APR/MAY/JUNE	60	0	0

GOALS AND ACTUAL NEW CLUBS CUMULATIVE



- - CURRENT YEAR GOALS FOR NEW CLUBS
- - CURRENT YEAR ACTUAL NEW CLUBS
- ▲ - LAST YEAR ACTUAL NEW CLUBS

GOALS AND ACTUAL MEMBERS CUMULATIVE



- - MEMBER GROWTH NET GOAL
- - MEMBER GROWTH ACTUAL
- ▲ - LAST YEAR MEMBERSHIP ACTUAL

DROPPED CLUBS: 3	46 CLUBS OF 103 ADDED 1 OR MORE NEW MEMBERS	GENDER DISTRIBUTION
		MALE 1,212 (51.86%)
		FEMALE 1,125 (48.14%)
DROPPED MEMBERS	CLICK HERE FOR CUMULATIVE MEMBERSHIP DATA	TOTAL FAMILY UNIT MEMBERS 583
DECEASED 25		FAMILY MEMBERS PAYING HALF DUES 310
CLUB CANCELLED 21		
OTHER 152		
TOTAL 198		